

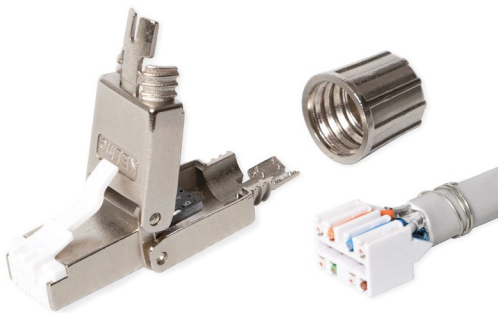
Toolless RJ45/s connector for direct termination on Cat.7_A, Cat.7, Cat.6_A cables

P/N: KE-FFT45-C6AS

10
Gigabit

Cat.6A
system

500
MHz



features

- the fastest and the easiest to mount tool-free industrial RJ45 connector for Cat.7_A, Cat.7, Cat.6_A installation cables
- ideal for IP camera and wireless devices connection without the need of using outlets and patch cords
- enables transmission of all high-speed protocols including 10GBASE-T within the system Cat.6A
- guarantees a bandwidth of 500 MHz within the system Cat.6A
- perfectly shielded against Alien Crosstalk and electromagnetic interference

mechanical properties

Suitable for installing on	cables with solid wires from AWG 23 to AWG 22
	cables with outer diameter 6 - 9 mm
Connector length	50,00mm
Housing material	nickel-plated die-cast zinc
Contact pin material	phosphor-bronze alloy coated with 50 μ of gold
IDC reterminations	min. 5
Insulation resistance	500 MΩ min
Contact resistance	20 mΩ max
Current rating	1,5 A
Test voltage	1000V DC, 1min
Temperature range	-20 °C to +70 °C